

**SCHEDA TECNICA – FELPA PERTH**  
**COD. HH181**

**CE... rossini.**

1° categoria per rischi minimi

**TESSUTO**

80% cotone  
 20% poliestere  
 Peso 290 g/m<sup>2</sup>  
 Con garzatura



09 – ARANCIO



01 – BLU



02 – BIANCO



04 – VERDE

**DESCRIZIONE**

Felpa con collo alto chiuso con cerniera corta, parasudore interno al collo, polsi e fascia girovita in maglia elastica.



05 – NERO



06 – AZZURRO ROYAL



07 – ROSSO

**TAGLIE**

S, M, L, XL, XXL, XXXL, 4XL, 5XL  
 XS solo per 02 bianco



10 – OLIVA ARMY GREEN



12 – GRIGIO



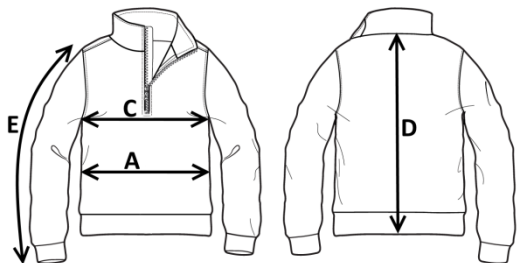
G6 – GRIGIO MELANGE




06 – AZZURRO ROYAL



Il margine di tolleranza produttivo, nel rispetto delle dimensioni della taglia, può essere del +/- 3%



SIZE - cm	XS	S	M	L	XL	XXL	XXXL	4XL	5XL
C – ½ CIRCONFERENZA TORACE	50	53	56	59	62	65	68	72	76
A – ½ CIRCONFERENZA VITA	47	50	53	56	59	62	65	69	73
D – LUNGHEZZA CENTRO DIETRO	66	68	70	72	74	76	78	80	82
E – LUNGHEZZA MANICA CON POLSO	59	61	63	65	67	69	71	73	75

 **TECHNICAL SHEET – PERTH SWEATSHIRT**  
CODE HH181

**CE... rossini.**

1ST CATEGORY FOR MINIMUM RISKS

**FABRIC**

80% cotton  
20% polyester  
Weight 290 g/m<sup>2</sup>  
Brushed



09 – ORANGE



01 – BLUE



02 – WHITE



04 – GREEN

**DESCRIPTION**

Sweatshirt with high collar closed with short zip, sweatband inside the collar and elastic knit cuffs and waistband.



05 – BLACK



06 – ROYAL BLUE



07 – RED

**SIZES**

S, M, L, XL, XXL, XXXL, 4XL, 5XL  
XS for 02 white



10 – OLIVE ARMY GREEN



12 – GREY



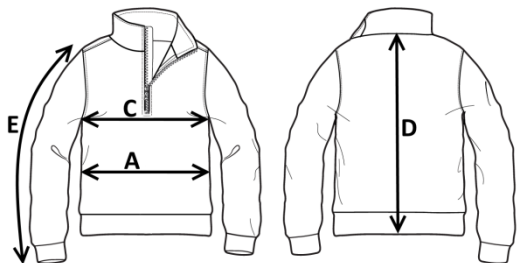
G6 – MELANGE GREY




06 – AZZURRO ROYAL



Measurements may vary +/- 3%, tolerance within size scale



SIZE - cm	XS	S	M	L	XL	XXL	XXXL	4XL	5XL
C – ½ CHEST CIRCUMFERENCE	50	53	56	59	62	65	68	72	76
A – ½ WAIST CIRCUMFERENCE	47	50	53	56	59	62	65	69	73
D – CENTER BACK LENGTH	66	68	70	72	74	76	78	80	82
E – SLEEVE LENGTH WITH CUFF	59	61	63	65	67	69	71	73	75

 **FICHA TÉCNICA – SUDADERA PERTH**  
CÓD. HH181

**CE... rossini.**

1ª categoría para riesgos mínimos

**COMPOSICIÓN**

80% algodón  
20% poliéster  
Peso 290 g/m<sup>2</sup>  
Con acolchado



09 – NARANJA



01 – AZUL



02 – BLANCO



04 – VERDE

**DESCRIPCIÓN**

Sudadera con cuello alto cerrado con cremallera corta, protección para el sudor en el interior del cuello y puños y banda en la cintura de punto elástico.



05 – NEGRO



06 – AZUL REAL



07 – ROJO

**TALLAS**

S, M, L, XL, XXL, XXXL, 4XL, 5XL  
XS solo para 02 blanco



10 – VERDE MILITAR



12 – GRIS



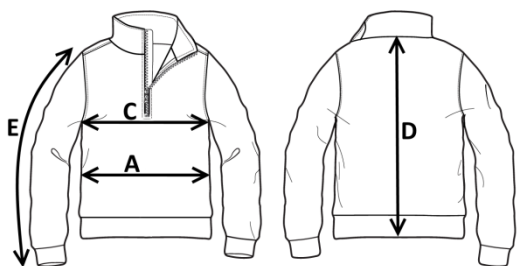
G6 – GRIS MELANGE



06 – AZUL REAL



El margen de tolerancia productiva, respetando las dimensiones de la talla, puede ser de +/- 3%



SIZE - cm	XS	S	M	L	XL	XXL	XXXL	4XL	5XL
C – ½ CIRCUNFERENCIA TORÁCICA	50	53	56	59	62	65	68	72	76
A – ½ CIRCUNFERENCIA DE LA CINTURA	47	50	53	56	59	62	65	69	73
D – LONGITUD CENTRAL ESPALDA	66	68	70	72	74	76	78	80	82
E – LONGITUD DE LA MANGA HASTA LA MUÑECA	59	61	63	65	67	69	71	73	75



**FISA TEHNICA – HANORAC PERTH**

COD. HH181

**CE... rossini.**

Categoria I pentru riscuri minime

**MATERIAL**

80% bumbac

20% poliester

Greutate 290 g/m<sup>2</sup>

Cu sanforizare



09 – PORTOCALIU



01 – BLEUMARIN



02 – ALB



04 – VERDE

**DESCRIERE**

Hanorac cu guler înalt închis cu fermoar scurt, protecție contra transpirației inserată în guler, manșetele și bandă de pe talie din material elastic.



05 – NEGRU



06 – ALBASTRU REGAL



07 – ROȘU



10 – MĂSLINIU ARMY



12 – GRI



G6 – GRI MELANJ



06 – ALBASTRU REGAL

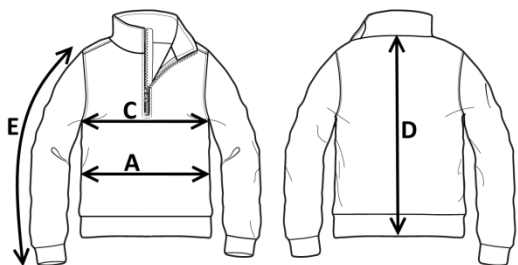


**MĂRIMI**

S, M, L, XL, XXL, XXXL, 4XL, 5XL

XS doar pentru 02 alb

Marja de toleranță a producției, respectând dimensiunile mărimii, poate fi de +/-3%.



SIZE - cm	XS	S	M	L	XL	XXL	XXXL	4XL	5XL
C – ½ CIRCUMFERINȚĂ TORACE	50	53	56	59	62	65	68	72	76
A – ½ CIRCUMFERINȚĂ TALIE	47	50	53	56	59	62	65	69	73
D – LUNGIME SPATE	66	68	70	72	74	76	78	80	82
E – LUNGIME MÂNECĂ CU MANȘETĂ	59	61	63	65	67	69	71	73	75

**FICHE TECHNIQUE – SWEAT-SHIRT PERTH**  
CODE HH181

CE **ROSSINI.**

I catégorie pour les risques minimaux

**TISSU**

80% coton  
20% polyester  
Poids 290 g/m<sup>2</sup>  
Avec lainage



09 – ORANGE



01 – BLEU



02 – BLANC



04 – VERT

**DESCRIPTION**

Sweat-shirt avec col montant fermé par une fermeture Éclair, bande anti-transpirante à l'intérieur du col, poignets et bande de taille en tricot élastique.



05 – NOIR



06 – BLEU CLAIR ROYAL



07 – ROUGE

**TAILLES**

S, M, L, XL, XXL, XXXL, 4XL, 5XL  
Taille XS uniquement en 02 blanc



10 – VERT MILITAIRE



12 – GRIS



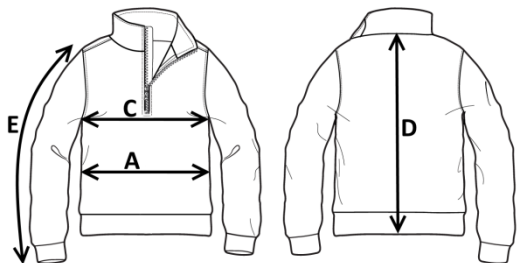
G6 – GRIS MÉLANGÉ



06 – BLEU CLAIR ROYAL



La marge de tolérance de production, dans le respect des dimensions de la taille, peut être de +/- 3 %



SIZE - cm	XS	S	M	L	XL	XXL	XXXL	4XL	5XL
C – ½ TOUR DE POITRINE	50	53	56	59	62	65	68	72	76
A – ½ TOUR DE TAILLE	47	50	53	56	59	62	65	69	73
D – LONGUEUR CENTRE ARRIERE	66	68	70	72	74	76	78	80	82
E – LONGUEUR MANCHE AVEC POIGNET	59	61	63	65	67	69	71	73	75